

Features

- Modular flow control valves with allen wrench (FC type) flow adjustment screw or manual knob (F type) to accurately adjust speed to actuators.
- Modular design with industry standard mounting pattern allows stacking of other various modules to create custom circuits to improve the system design.
- Modular valves are flexible, easy to replace and maintain without the cost of custom manifolds.
- Flow control valves with reverse free flow check valve are reversible for meter-in or meter-out control.



F type



FC type

Ordering Details

V	Valve
M	Modular
FC-	Type: F = Flow, FC = Flow with reverse free flow check
6-	Mounting Size: _____
AB-	Circuit Function: _____
H-	Adjustment: H= Allen wrench, R = Rotary knob
1	Series

Code	Size
6	NG6 (D03)
10	NG10 (D05)
16	NG16 (D07)
22	NG22/25 (D08)

Flow, F		Flow w/Check, FC Meter-out shown	
Code	Symbol	Code	Symbol
P		A	
		B	
		AB	

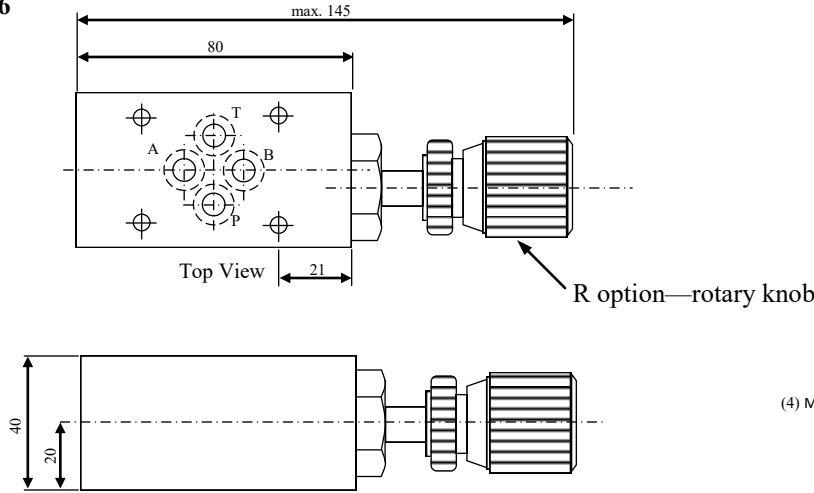
Example Part Number: VMFC-6-AB-H-1

Technical data

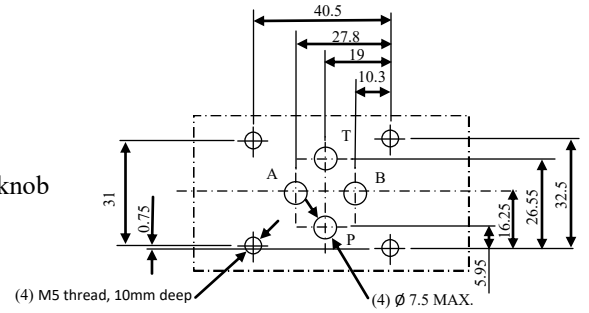
	Size	Max. Flow lpm (gpm)	Max. Pressure, bar (psi)	Weight Kg (lbs.)	Fluid Recommendation	Working temperature
F Valve	VMC-6	35 (9.2)	210 (3045)	1.2 (2.6)	Mineral Based, viscosity 10- 800mm ² /s	-20 to +80°C (-4 to +176°F)
	VMC-10	70 (18.4)	210 (3045)	2.7 (5.9)		
FC Valves	VMCP-6	20 (5.2)	350(5075)	1 (2.2)		
	VMCP-10	80 (21.0)	350(5075)	3.1 (6.82)		
	VMCP-16	250 (65.8)	350(5075)	4.7 (10.3)		
	VMCP-22	360 (94.7)	350(5075)	8 (17.6)		

Dimensional Data, VMF (Dimensions in mm)

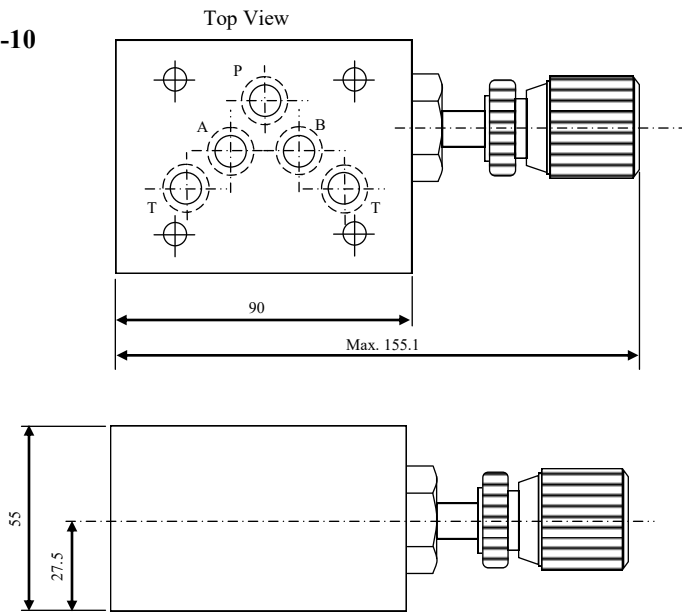
VMF-6



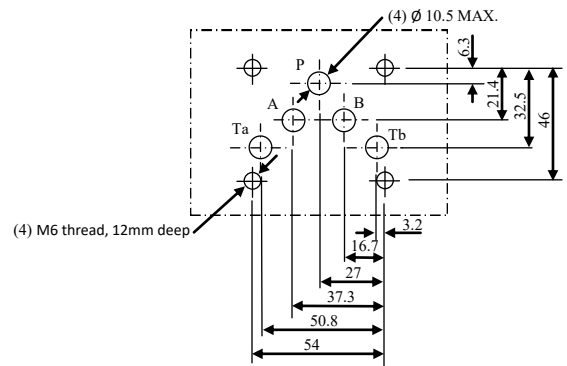
NG6/D03 Mounting Dimensions of mating surface



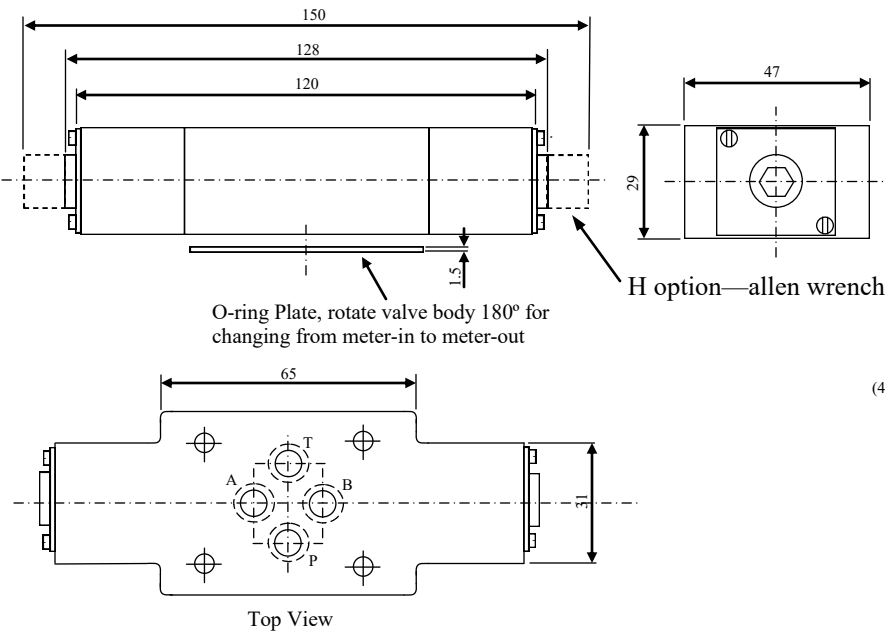
VMF-10



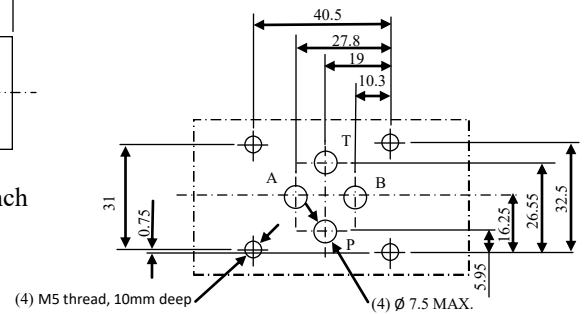
NG10/D05 Mounting Dimensions of mating surface



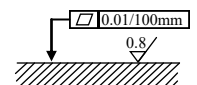
Dimensional Data, VMFC (Dimensions in mm)



NG6/D03 Mounting Dimensions of mating surface

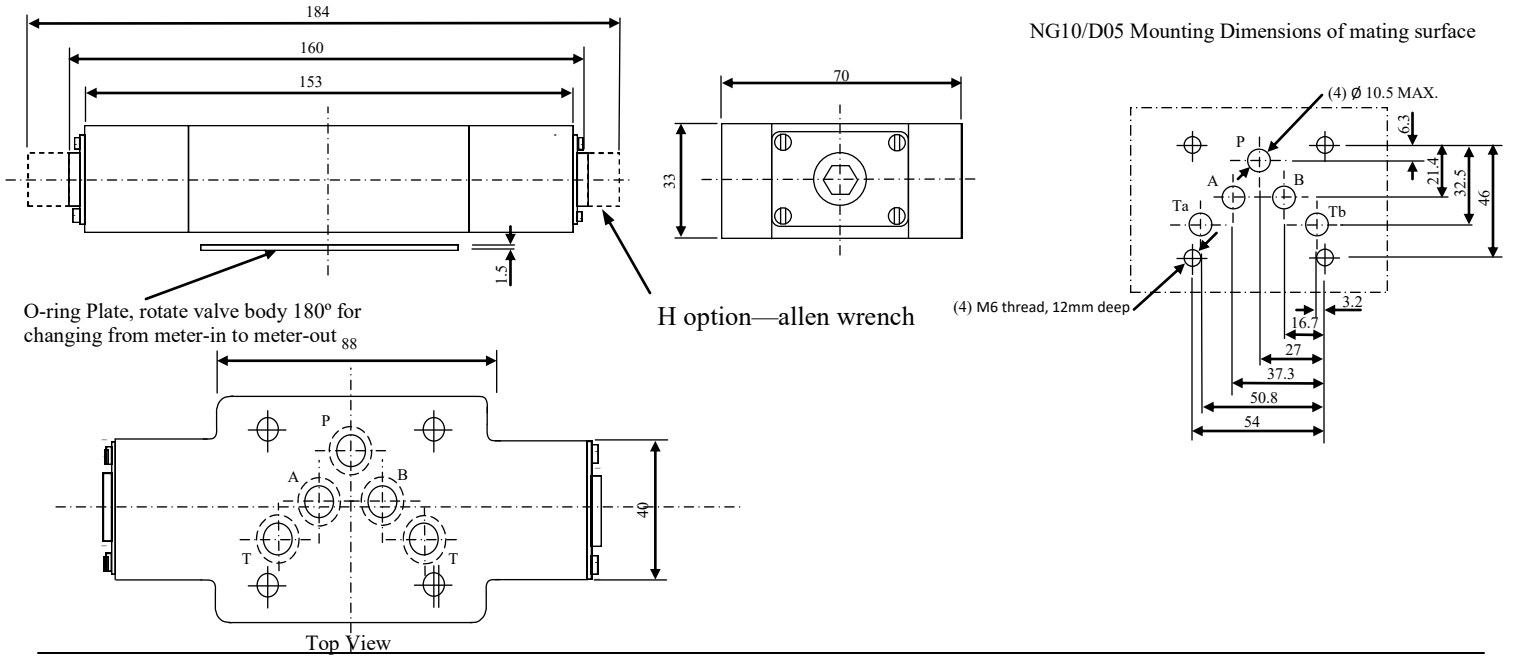


Note : Mating Surface Requirement

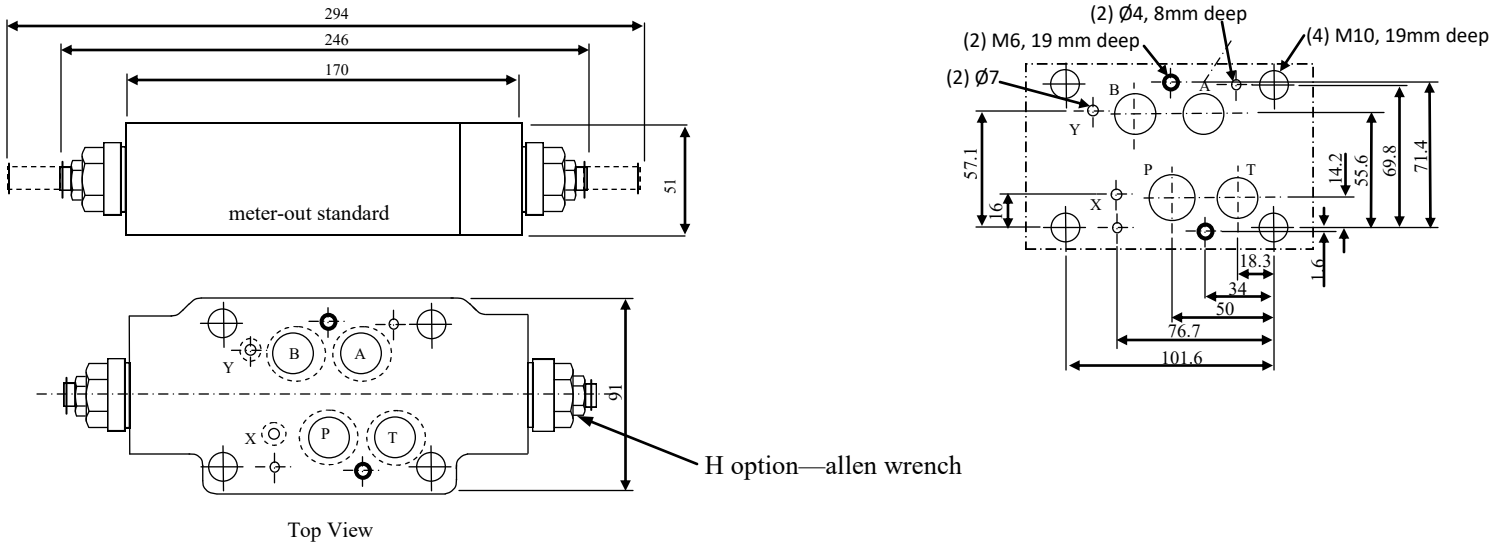


Dimensional Data, VMFC (Dimensions in mm)

VMFC-10



VMFC-16



VMFC-22

